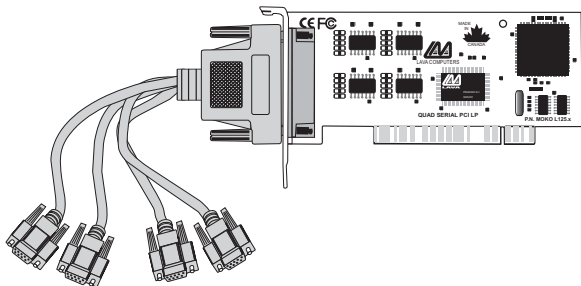


# Lava Quattro-PCI/LP Installation Manual

---

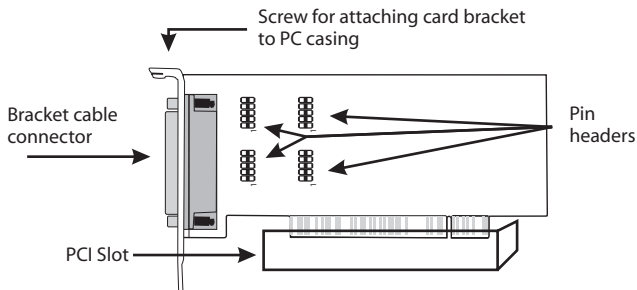


Rev. B00

## Hardware Installation

1. Before opening the casing of your computer, make sure that all power is off.
2. Locate an unused PCI slot and insert the Quattro-PCI/LP card into it. Ensure that the card is well seated.
3. Screw the metal bracket of the Quattro-PCI/LP card to your PC's casing and replace the machine's cover.

**NOTE:** Serial connections to the Quattro-PCI/LP can be via the fanout cable (attached to the bracket connector) or via the on-board pin headers for each port. Do not connect to both the fanout cable connector and the pin headers at the same time for any given port.



## Pin Header Assignments

2	4	6	8	10	1	3	5	7	9

1	DCD
2	Rx
3	Tx
4	DTR
5	GND
6	DSR
7	RTS
8	CTS
9	RI
10	not used

**NOTE:** The position of Pin 1 is marked on the board. Attach cable with red wire on Pin 1.

## **Windows NT 4.0 Installation**

1. With the power turned off, insert the Quattro-PCI/LP card into any free PCI slot in your PC. Boot NT logging on as "Administrator".
2. Place the Quattro-PCI/LP installation diskette into your floppy drive and select Run from the Start Menu. When prompted type:  
A:\NT4.0\Setup.
3. After the necessary files have been copied, select My Computer and start Control Panel. A new icon will appear called "LavaPort." This applet should now be used to configure ALL Com Ports in your PC – not just Lava serial ports.

Please note that Com 1 may not appear in this applet if you have your mouse attached to Com 1.

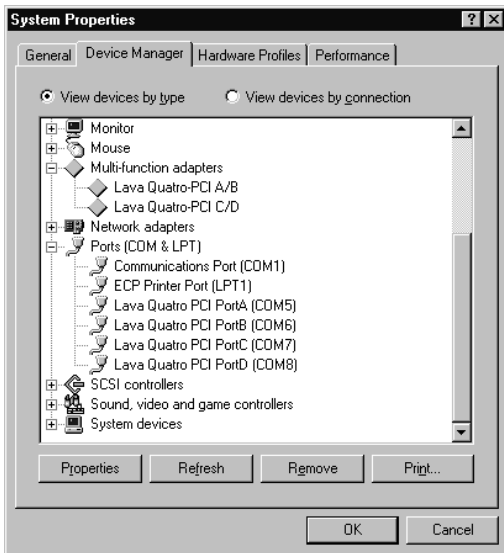
## **DOS & Windows 3.x Installation**

1. With the power turned off, insert the Quattro-PCI/LP card into any free PCI slot in your PC. Turn your PC on. Boot to DOS.
2. Place the Quattro-PCI/LP installation diskette into your floppy drive. In the Win3.11 subdirectory of this diskette you will find a file called "Lavaconf.exe". Copy this file to your hard drive and run it.
3. When run, Lavaconf.exe will display four I/O addresses and one IRQ. These correspond to the addresses and IRQ chosen by your PC when configuring the Quattro-PCI/LP. Make a note of them.
4. If you are using Windows 3.x, start Windows and go to Control Panel | Ports. Choose Com 3 for Port A and Com 4 for Port B on the Quattro-PCI/LP. Click the Advanced button and enter the I/O address and IRQ for each port as reported by Lavaconf.exe. Reboot your PC for these changes to take effect.

Note: Native DOS and Windows 3.X support a maximum of four Com ports in a PC. If you wish to use all four ports on the Quattro-PCI/LP, you must disable the existing ports on your motherboard.

## **Windows 95/98/Me/2000/XP Installation**

1. With the power turned off, insert the Quattro-PCI/LP card into any free PCI slot in your PC. Make sure the card is well seated. Turn your PC on and start Windows.
2. Windows will automatically detect the Quattro-PCI/LP as a new PCI Serial Controller and ask you to insert the Installation Diskette. The installation files are located in the root directory of this disk. Windows XP may display a message to the effect that the drivers are not digitally signed. This warning can be ignored.
3. After the necessary files have been copied, Windows will complete the full installation of the Quattro-PCI/LP. During this process, two Quattro-PCI/LP parents will be created in Device Manager under Multi-Function Adapters, and four child ports will be created under Control Panel | System | Device Manager | Ports.



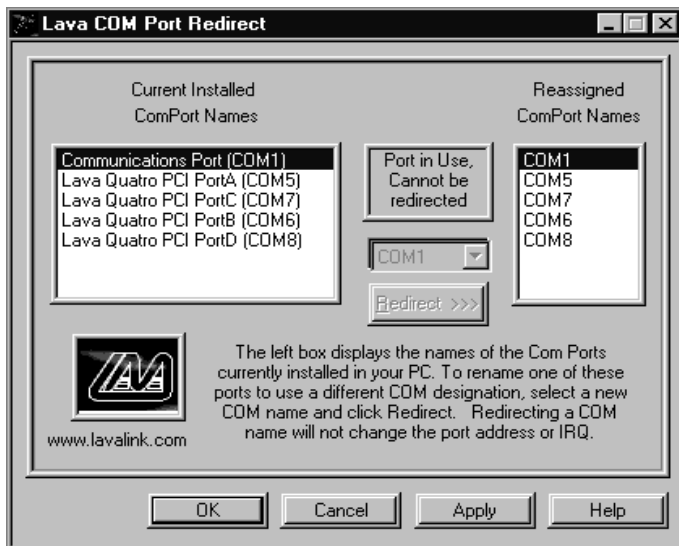
The Quattro-PCI/LP hardware appears in Device Manager in two places: under the Multi-function Adapters tree and as part of the Ports tree. Please note that any changes to the Resources (I/O Address & IRQ) used by any one of the four ports on the Quattro-PCI/LP must be made through the Resources page of the appropriate Quattro-PCI/LP PARENT – not through the individual Ports pages.

**Modifying I/O Address and IRQ Resources is NOT recommended.**

## Changing the Com numbering of your Quattro-PCI/LP ports (Windows 95/98/Me only)

Unless you already have more than 4 Com ports installed in your PC, Windows will by default configure the Quattro-PCI/LP ports as Com 5 through Com 8. To change the Com number of any of these ports (e.g. reassign Com 5 to be Com 3), please use the Lava Com Port Redirect Utility included in the "Utils\Redirect" subdirectory of your Installation Diskette. Such a reassignment may be necessary because some communications applications programs do not recognize port designations beyond Com 4. The Com Port Redirect utility will allow you to change the Com numbering of your ports **without changing I/O address resources**.

To install the Port Redirect Utility on your hard drive, insert the Installation Diskette into your floppy drive, click Start, Run and type A:\Utils\Redirect\Setup.



## **Changing the Com numbering of your Quattro-PCI/LP ports (Windows 2000/XP only)**

In Windows 2000 and XP, Com port numbering can be changed by double-clicking the serial port entry displayed in Windows' Device Manager. Go to Port Settings | Advanced, and choose Com Port #.

# **Lava Technical Support**

9:00 am to 5:30 pm Monday to Friday (Eastern Time)

Tel: +416 674-5942

Fax: + 416 674-8262

E-mail: [tech@lavalink.com](mailto:tech@lavalink.com)

Internet: [www.lavalink.com](http://www.lavalink.com)



## **Lava Computer MFG Inc.**



This device complies with part 15 of the FCC Rules. Operation is subject to the following conditions: (1) This device may not cause harmful interference, and (2) this device must accept any interference received, including interference that may cause undesired operation.

Lava Computer MFG Inc. 908 Niagara Falls Blvd. #629. North Tonawanda NY 14120-2060

